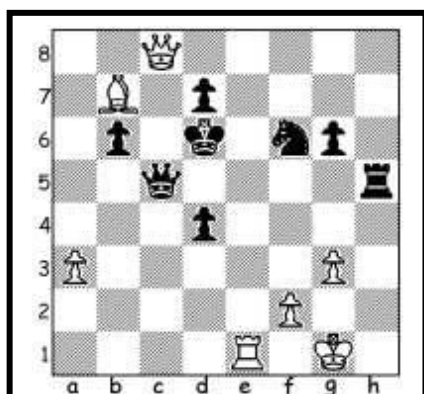


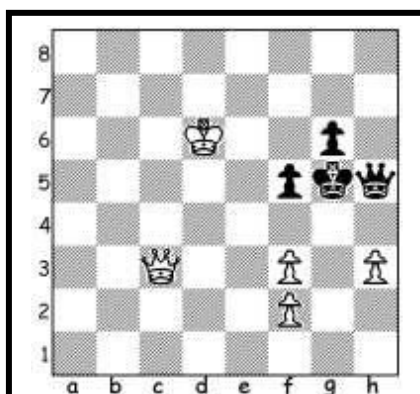
# Matto in due mosse

Muove il bianco



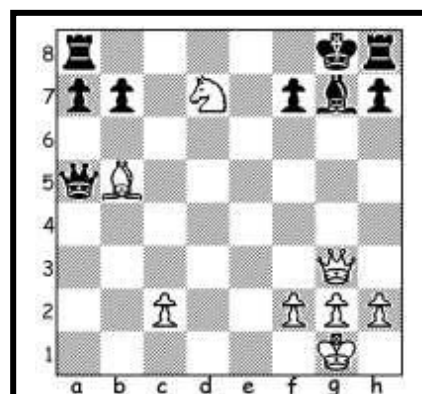
1).Db8+ ; Dc7

2).Df8#



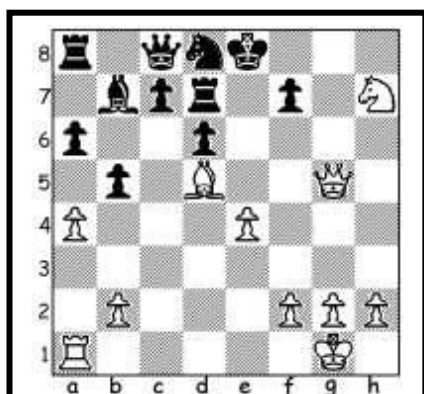
1).f4+ ; Rxf4

2).De3#



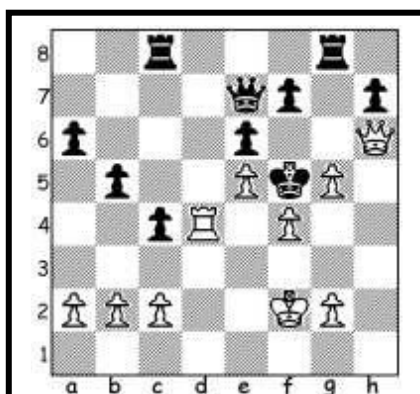
1).Cf6+ ; Rf8

2).Dd6#



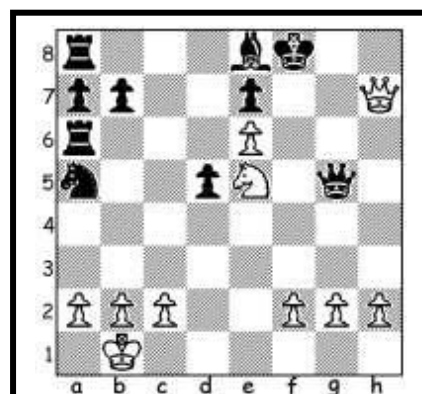
1).Dg8+ ; Re7

2).Df8#



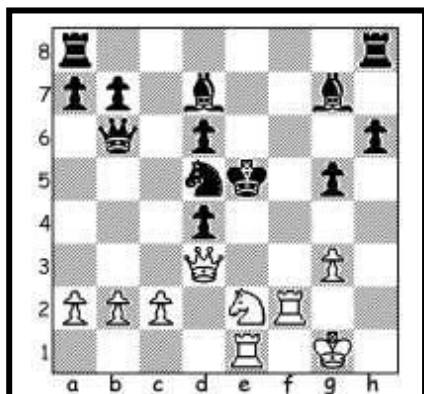
1).Dxh7+ ; Tg6

2).Dh3#



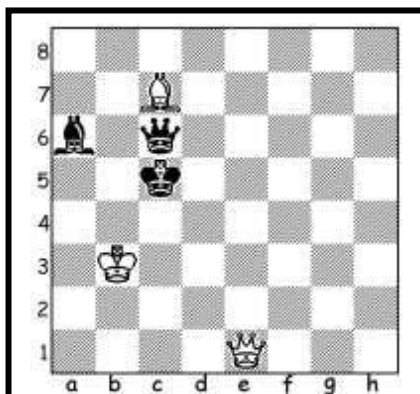
1).Cd7+ ; AxCd7

2).Df7#



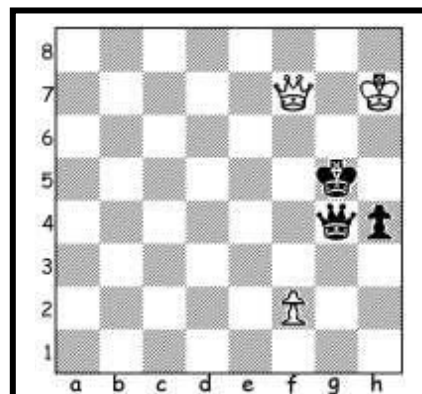
1).Cc3+ ; Ce3 2).De4#

1).De4+ ; RxDe4 2).Cc3#



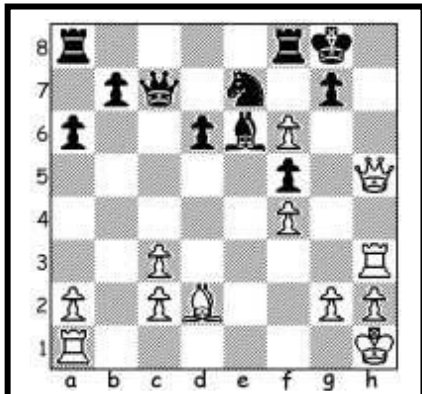
1).Dc3+ ; Rd5

2).De5#



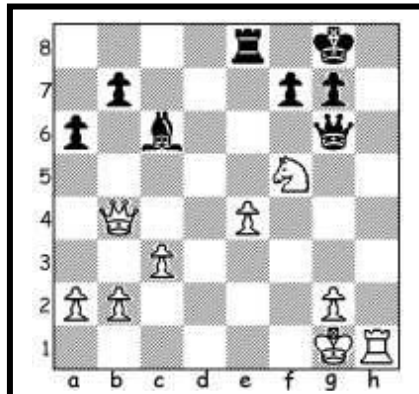
1).f4+ ; Dxf4

2).Dg6#



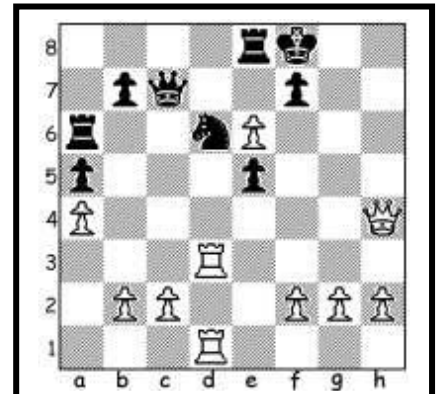
1).f7+ ; Axf7

2).Dh8#



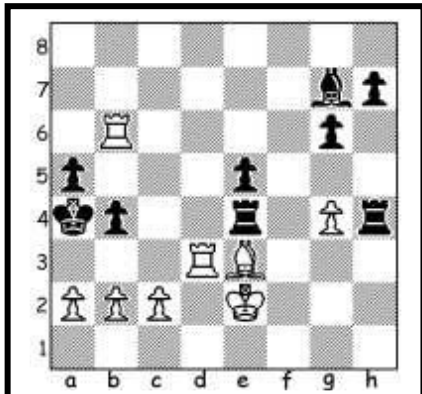
1).Df8+ ; TxDf8

2).Ce7#



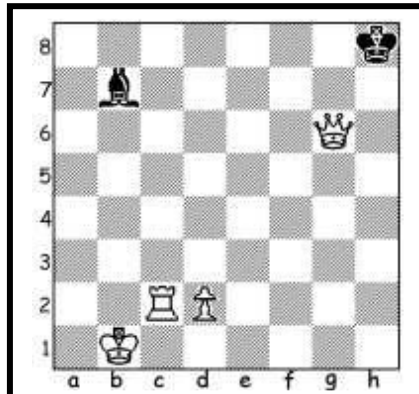
1).e7+ ; Txe7

2).Dh8#



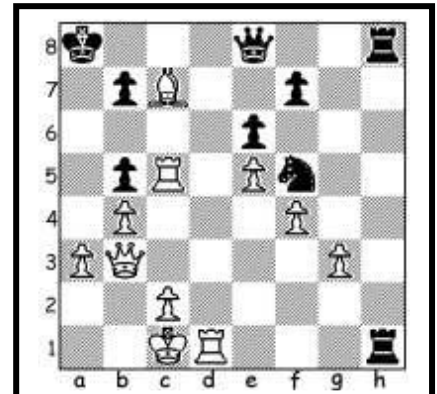
1).Ta3+ ; bXTa3

2).b3#



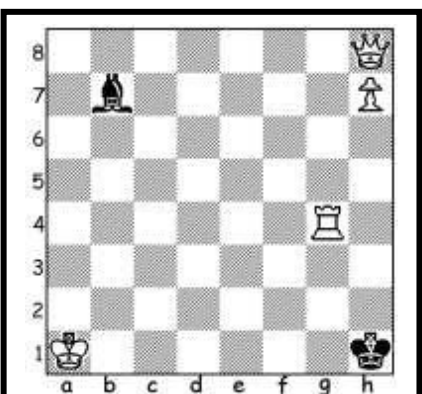
1).d3 ; -----

2).Th2# o 2).Tc8#



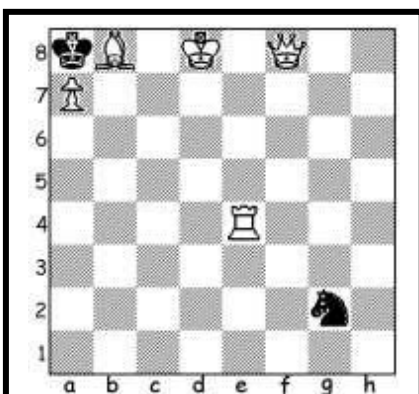
1).Da4+ ; bxDa4

2).Ta5#



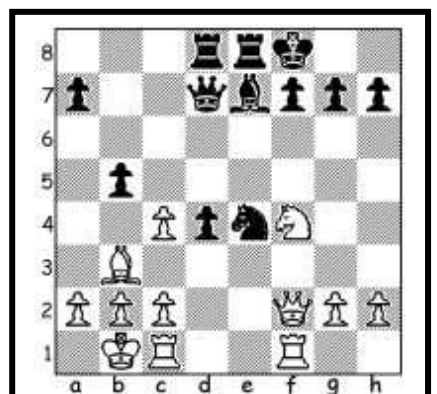
1).Da8 ; AxDa8

2).h8=D#



1).Df3 ; Rb7

2).Te6#



1).Cg6+ ; Rg8

2).Dxf7#