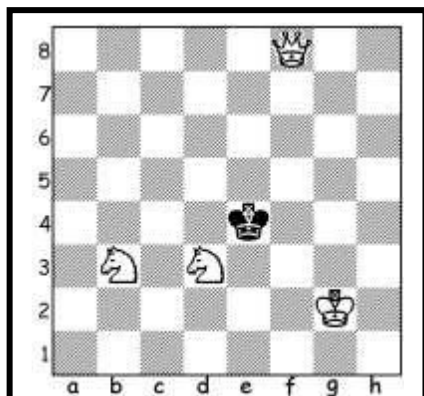
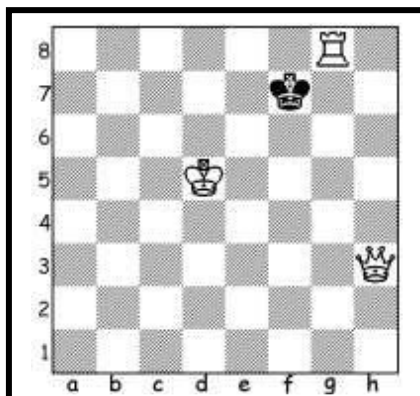


# Matto in una mossa

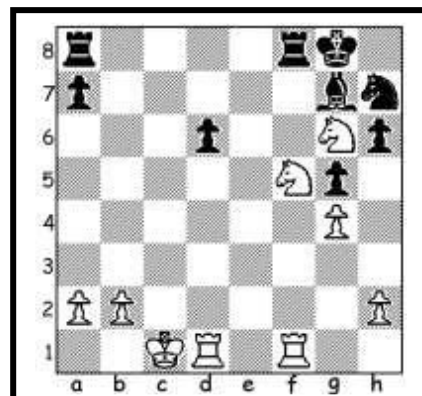
Muove il bianco



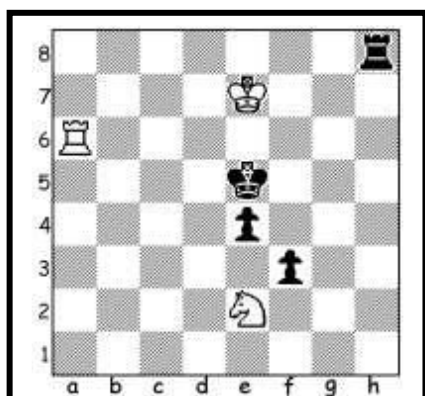
**1).Df3#**



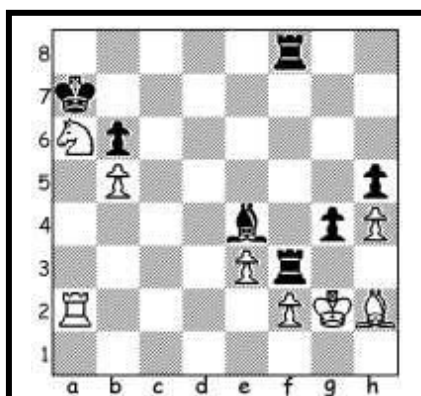
**1).De6#**



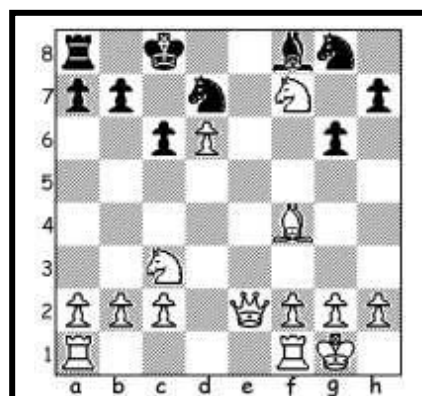
**1).Cfe7#**



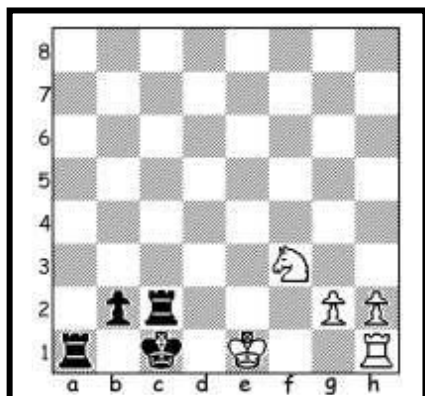
**1).Ta5#**



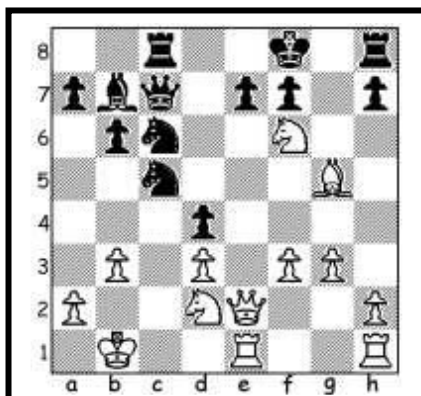
**1).Cc5#**



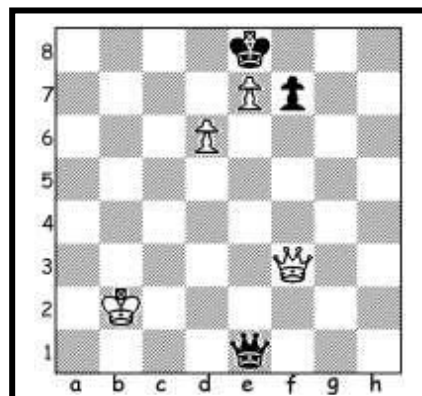
**1).De8#**



**1).0-0#**



**1).Ah6#**



**1).Dc6#**

Chessboard diagram showing a checkmate on a8. The black king is on a8, and the white rook is on a6. The black king is in check, and there are no pieces that can capture the rook or block the check.

**1).Ah6#**

Chessboard diagram showing a checkmate on d6. The black king is on c7, and the white queen is on d6. The black king is in check, and there are no pieces that can capture the queen or block the check.

**1).Dh6#**

Chessboard diagram showing a checkmate on g8. The black king is on g8, and the white rook is on g8. The black king is in check, and there are no pieces that can capture the rook or block the check.

**1).Tg8#**

Chessboard diagram showing a checkmate on f6. The black king is on e1, and the white knight is on f6. The black king is in check, and there are no pieces that can capture the knight or block the check.

**1).Cf6#**

Chessboard diagram showing a checkmate on g7. The black king is on g1, and the white queen is on g7. The black king is in check, and there are no pieces that can capture the queen or block the check.

**1).Dg7#**

Chessboard diagram showing a checkmate on h3. The black king is on h4, and the white rook is on h3. The black king is in check, and there are no pieces that can capture the rook or block the check.

**1).Th3#**

Chessboard diagram showing a checkmate on g6. The black king is on e5, and the white knight is on g6. The black king is in check, and there are no pieces that can capture the knight or block the check.

**1).Cxg6#**

Chessboard diagram showing a checkmate on e7. The black king is on e2, and the white rook is on e7. The black king is in check, and there are no pieces that can capture the rook or block the check.

**1).Ae7#**

Chessboard diagram showing a checkmate on c6. The black king is on c2, and the white rook is on c6. The black king is in check, and there are no pieces that can capture the rook or block the check.

**1).Ch6#**